

CLAREMONT HOMES – THE OAKS OF ARGYLE

217 BOONESVILLE BEND, 4092 SQUARE FEET



For information on this new up-coming Custom home. Please contact Peggy Maxfield at: 817-320-5347

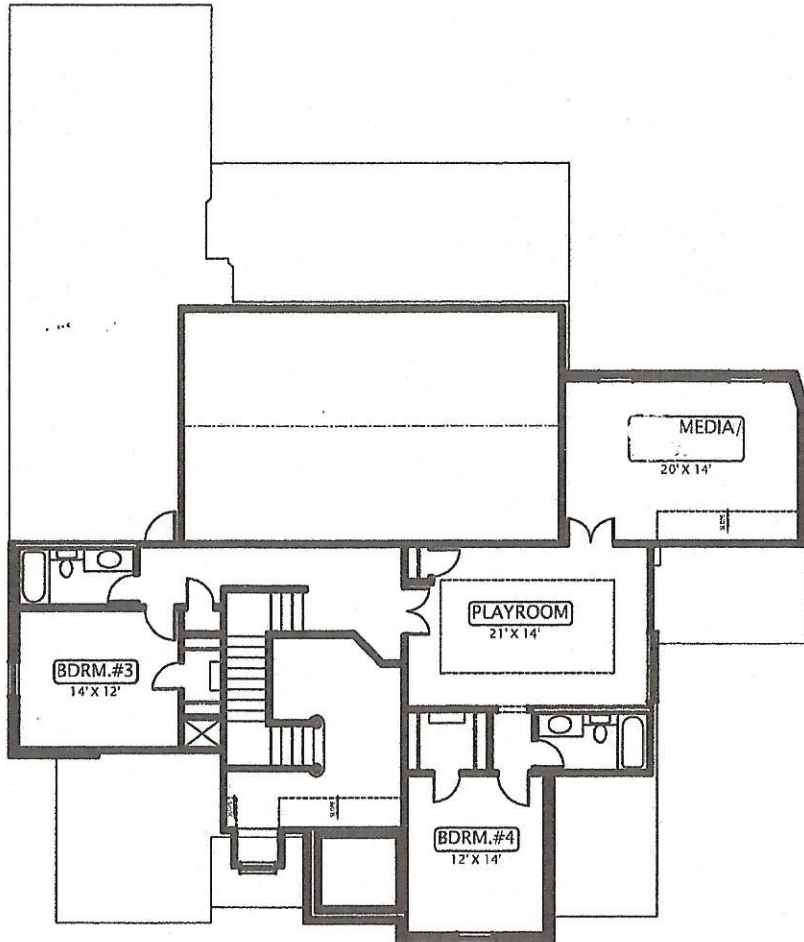
email Peggy@CraftsmanVillageHomes.net

AREAS	
FIRST FLOOR LIVING AREA	2716 SQ. FT.
SECOND FLOOR LIVING AREA	1071 SQ. FT.
OPTIONAL MEDIA ROOM	305 SQ. FT.
TOTAL LIVING AREA	4092 SQ. FT.
GARAGE	850 SQ. FT.
PORCH & PATIO (109+367)	476 SQ. FT.

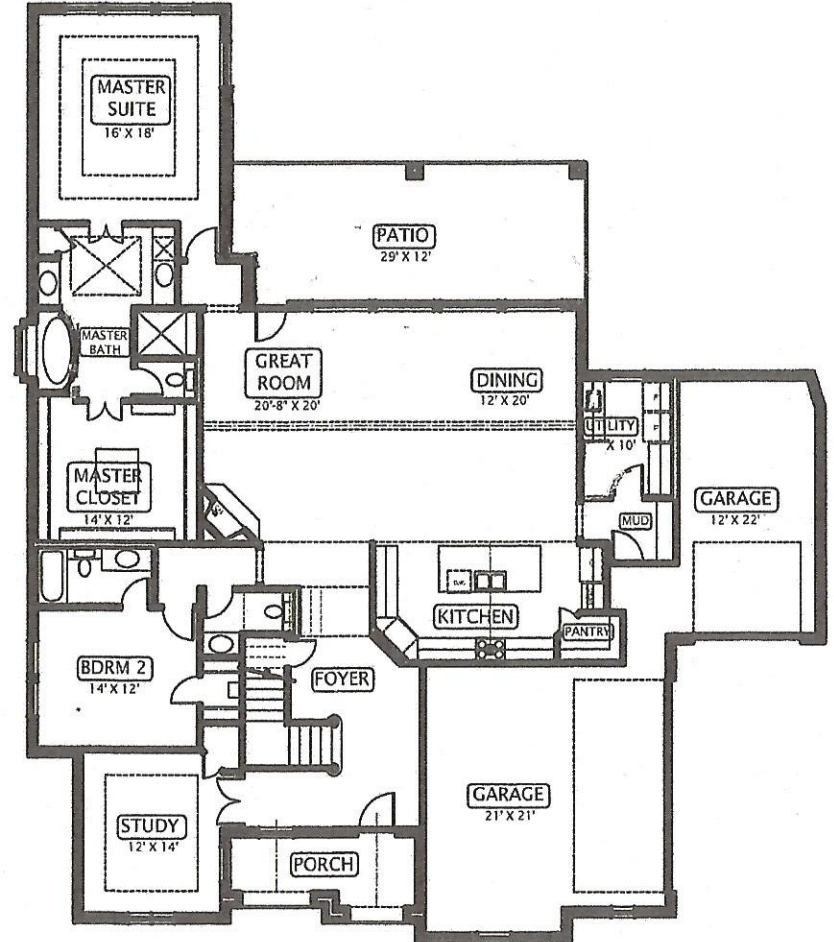
\$ 679,500.

Home will include:

Full foam encapsulation insulation, High quality granite counter tops
 Custom Cabinets Stain and paint options, generous lighting and appliance package.
 Scraped wood floors and beautiful Tile in bathrooms and utility room.
 4 ½ baths, Study, 3-Living areas, large Covered Rear Patio. Split car garages.
 Premium wooded lot that backs up to the park with full view wrought iron fence.



SECOND FLOOR PLAN



FIRST FLOOR PLAN

All plans & elevations are subject to change without prior notice. All designs are the property of Claremont Homes LLC and copyright laws will be enforced. All plan figures and square footages are approximate and may vary with alternate elevations. Claremont Homes reserves the right to make alterations to all plans and elevations without prior notice